



IM#: 18-0105651

Currency
casegoods

Steelcase



IM#: 19-0120583

Adaptable Workspace for Every Office

Versatile and durable, Currency® offers a range of cost-effective, laminate workstation solutions for all types of offices. With a broad statement of line, it provides workers with choice and control while bringing the natural appearance and warmth of wood into the workplace.



IM#: 18-0105652

Personalizing Space and Customizing Storage

Workwall offers the ability to personalize offices by allowing workers to define individual and collaborative workspaces, and create privacy without boundaries. With open and closed storage options, versatile styling, and quality construction, Currency adapts to a variety of needs and complements both traditional and modern work environments.



IM#: 18-0105646



IM#: 19-0121727



IM#: 17-0079310

Blends Well With Others

With a range of durable surface materials as well as compatible dimensions, Currency seamlessly blends with many other applications and product lines, including Steelcase Elective Elements®, Answer™, Migration™ and Ology™.



IM#: 18-0105648



IM#: 18-0105649



IM#: 18-0105647



IM#: 18-0101862

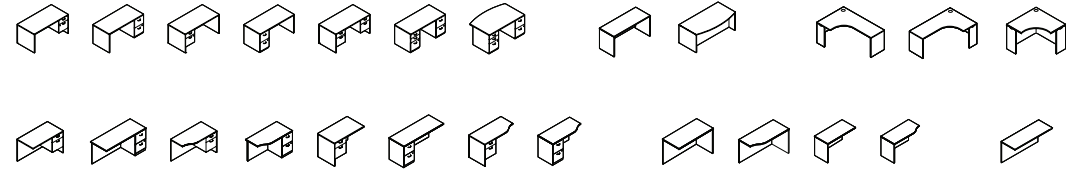
Adapts to Any Environment

Versatile and durable, Currency offers a range of cost-effective, laminate workstation solutions for all types of offices. With a broad statement of line, it provides workers choice and control while bringing the natural appearance and warmth of wood into the workplace.

STATEMENT OF LINE

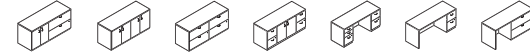
DESKS & RETURNS

Desks: 30"-42"D; 60"-72"W
 Desk Shells: 24"-42"D; 30"-72"W
 Corner Desk Shells: 24"-42"D; 42", 66", 72"W
 Returns: 24"D, 24/30"D; 42"-48"W
 Return Shells: 24"D, 24/30"D; 42"-48"W
 Bridges: 24"D; 36"-48"W
 Runoffs: 30"-42"D; 66"-72"W
 Slatwall Screen and Slatwall Tackboard:
 18"-68 $\frac{1}{8}$ "W



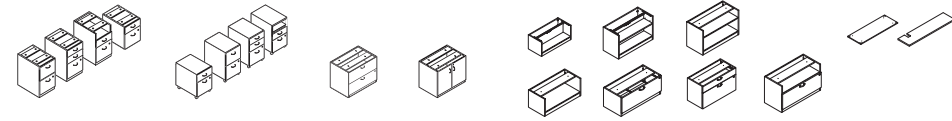
CREDENZAS

Full-Storage Credenzas: 24"D; 66"-72"
 Pedestal Credenzas: 24"D; 66"-72"
 Single Lateral File Credenzas: 24"D; 66"-72"



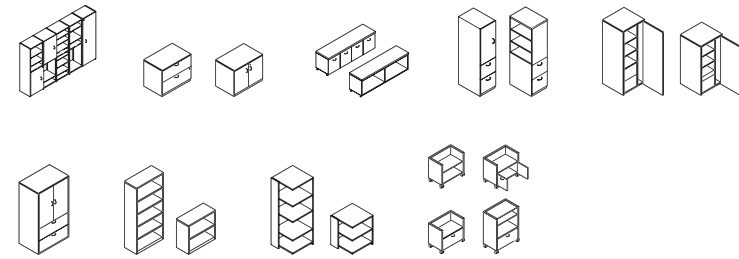
UNDER-WORKSURFACE STORAGE

Pedestals: 18"D, 23"D, 29"D; 15 $\frac{3}{4}$ "W
 Mobile Pedestals: 18"D, 22"D; 15 $\frac{3}{4}$ "W
 Lateral Files: 18"D, 23"D; 36"W
 Storage Cabinets: 23"D; 36"W



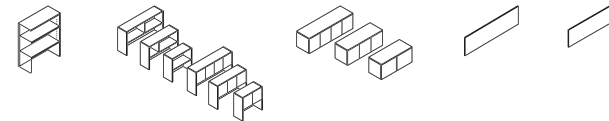
FREESTANDING STORAGE

Workwall: 69"-114 $\frac{1}{8}$ "W; 72"H
 Lateral File: 24"D; 36"H
 18"W Towers: 24"D; 66"H
 24"W Towers: 24"D; 48"H, 66"H
 36"W Storage Cabinet w/Lateral
 File Drawers: 24"D; 66"H
 Bookcases: 15 $\frac{3}{8}$ "D; 36"W;
 28 $\frac{1}{2}$ "H, 66"H, 72"H
 Quarter Bookcases: 24"D; 24"W;
 28 $\frac{1}{2}$ "H, 66"H
 Mobile Carts: 30"W; 25 $\frac{3}{8}$ "H, 42 $\frac{5}{8}$ "H



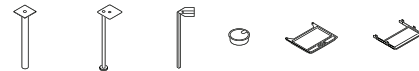
UPPER STORAGE

Stacking Bookcases: 15 $\frac{3}{8}$ "D, 36"W
 Overhead Storage Cabinets:
 15 $\frac{1}{8}$ "D, 36"-72"W
 Wall-Mounted Overhead Storage:
 15 $\frac{1}{8}$ "D, 36"-72"W
 Tackboards: 34"-70"W
 Wall-Mounted Tackboards: 36"-72"W



LEGS & ACCESSORIES

Column Leg
 Post Leg
 Square Leg
 Grommets
 Center Drawer
 Keyboard Shelf



Note: Please refer to the Wood Casegoods and Tables Specification Guide for actual dimensions, as well as a complete list of specifications and parts.

SURFACE MATERIALS

Surface materials shown in brochure:

LAMINATES

2L30 Arctic White
 2LAK Clear Oak
 2LCN Clay Noce
 2LSN Storm Noce
 25L5 Virginia Walnut

PULL FINISHES

4799 Platinum
 7207 Black

Colors are representative and may vary slightly from actual material.

For further options, visit the Steelcase Surface Materials Library.

SUSTAINABILITY

At its heart, sustainability at Steelcase is about people. It's about creating and supporting the economic, environmental and social conditions that allow people and communities to reach their full potential.

Research and insights direct our path. It's not only about creating goods, it's about creating good. It's not only about creating value, it's about living our values. It's not just about reducing our footprint, it's about expanding our reach. It's about creating lasting and meaningful change to enable the long-term wellbeing of current and future generations.

Innovative products and solutions result. In the development of our products, we work to consider each stage of the life cycle: from materials extraction, production, transport, use and reuse, until the end of its life. We demonstrate performance through third-party verified certifications and voluntary product declarations.

Steelcase's sustainability promises, actions, and results are communicated in an annual Corporate Sustainability Report.



SCS Indoor Advantage™ Gold certified for indoor air quality in North America



Level® 2 certified to ANSI/BIFMA e3

Steelcase®

Call 800.333.9939 or visit [Steelcase.com](https://www.steelcase.com)

 [facebook.com/Steelcase](https://www.facebook.com/Steelcase)

 twitter.com/Steelcase

 [youtube.com/SteelcaseTV](https://www.youtube.com/SteelcaseTV)

Item #18-0005388 10/19 ©2019 Steelcase Inc. All rights reserved. All specifications subject to change without notice. Trademarks used herein are the property of Steelcase Inc. or of their respective owners. Printed in U.S.A. FSC certified.